



1989-2014  
**CELEBRATING**  
25 YEARS



**Geo**  
THE BIG FIVE  
**agi**

---

# The AGI Awards for Geospatial Excellence 2014

---

Fostering spatial creativity across industry, academia and government



THE ASSOCIATION  
FOR **GEOGRAPHIC**  
**INFORMATION**

1 Kensington Gore, London SW7 2AR  
Tel: +44 (0) 20 7591 3190  
[www.agi.org.uk](http://www.agi.org.uk)



THE ASSOCIATION  
FOR **GEOGRAPHIC**  
**INFORMATION**

1 Kensington Gore, London SW7 2AR  
Tel: +44 (0) 20 7591 3190  
[www.agi.org.uk](http://www.agi.org.uk)

# Welcome

The AGI Awards for Geospatial Excellence is where we celebrate the best in class across our industry. During this, our 25th year, we have re-vitalised the Awards to provide a better insight into progress across the industry, and to support development of our professionals throughout their careers. This is absolutely about recognising the invaluable relationship members have and are forming beyond our immediate community, with partners and clients within and beyond the GI industry. Each one of this year's awards should inspire us to think about how we best approach and engage with the many challenges where we have the potential to impact, influence and help develop integrated and embedded solutions.



**Dr Anne Kemp**  
**AGI Chair 2014**

All the people behind the entries for these Awards should be congratulated – your passion and ideas will help set the agenda of the GI community for the next few years. These awards provide us with the opportunity to celebrate best practice from across our industry and look forward to how we are developing and innovating in an increasingly relevant but rapidly changing industry. I'd like to pay particular thanks to our sponsors and Judges. Without your support, these awards would not have been possible.

Finally, Congratulations! To be shortlisted for an award, or to actually win an award, is a real achievement and one which should be celebrated and shared.



**Professor Iain Stewart,**  
**Professor of**  
**Geosciences**  
**Communication,**  
**University of Plymouth**

The AGI Awards for Geospatial Excellence 2014 was delighted to welcome Professor Iain Stewart, Professor of Geoscience Communication at Plymouth University to compère the Awards Ceremony. Iain is an Earth scientist and broadcaster specialising in recent geological change. He has presented major television series for the BBC on the nature, history and state of the planet, most notably 'Earth: The Power of the Planet'; 'Earth: The Climate Wars'; 'How Earth Made Us', 'How To Grow A Planet'; 'Volcano Live', and 'Rise of the Continents'. Iain gave the audience a thought provoking talk about the importance of place and 'Geo' to society. He stressed that the key is to have a compelling narrative to get people excited about your message. He talked about the need to communicate the benefits of what Geo can bring to various initiatives that effect society, such as Future Cities, and thus exciting people in such a way that it makes them aware of why the Geospatial industry is important to them.

# About The Awards

## **The AGI Award for the Best Paper at Conference - Sponsored by Informed Solutions**

Judged by delegates attending the AGI's main conference, GeoCom. The award is given to the best presentation at GeoCom, whether this be due to the subject matter conveyed, impact, novelty or just sheer brilliance.

## **The AGI Award for the Best Paper within the Event Programme**

A paper from each event (other than GeoCom) in the AGI's event series is shortlisted and then an overall winner of this award is determined by the Chair of the AGI's Event's Action Working Group.

## **The AGI Award for Excellence in Education**

This category acknowledges the very best examples of geospatial for educational purposes whether this be tools, workshops, institutes, courses or seminars. These entries reflect those offering courses in continuing professional development for existing geospatial professionals but also those helping to produce the next generation of geospatial professionals through academic teaching.

## **The AGI Award for Best Geospatial Data Visualisation**

Acknowledging those projects that recognise the importance of visual representation in conveying a message or story with geospatial data. The award aims to stretch perceptions of GI by embracing novel examples of how Geospatial data can be used to enhance a visualisation beyond traditional cartographic outputs.

## **The AGI Award for Excellence in Research & Development - Sponsored by GISStandards**

Projects that have advanced best practice, technology or tools to the benefit of the geospatial industry are acknowledged in this category. The judges were particularly keen to see examples of where research was novel or challenging but also effective in addressing the needs of society or challenges for the geospatial industry itself.

## **The AGI Award for Excellence with Impact - Sponsored by 1Spatial**

This award recognises those projects which have achieved outstanding success or impact whether this be societal, humanitarian, environmentally and/or financially based or at a local, regional, national or international scale.

## **The AGI Award for Best Use of Geospatial for Business Benefit - Sponsored by Ordnance Survey**

Outstanding achievement in the use of geospatial technology, particularly those that have had positive impact on business processes or practices and can demonstrate significant return on investment are judged in this award.

## **The AGI Student of the Year - Sponsored by Esri UK**

With the Student of the Year award we recognise the best research projects and was open to all students (undergraduate and postgraduate) of universities in the United Kingdom for work done in the academic year 2013/2014 (Sept. 2013 - Sept. 2014).

## **The AGI Award for Exceptional Service**

Awarded to someone within the AGI volunteer base who has demonstrated exceptional commitment to the mission of the AGI, notably during the year. The recipient of this award, does so on behalf of all the volunteers during the year.

## **The AGI Award for Career Achievement in GI**

This prestigious award is given to a person who has made a significant long term contribution to geospatial within their professional career. Members were asked to nominate individuals who were notably deserving of such an award.

# Award Sponsors



Congratulations to the worthy winners for pushing the boundaries of GIS with their ground-breaking work in visualisation and the application of GI. These outstanding award winners demonstrate innovative GI approaches vital to delivering value-add solutions for customers, as well as excellence in teaching and research that, together, will help to build our GI community of the future.



Ordnance Survey is the national mapping authority of Great Britain and is a non-ministerial government department with Executive Agency status, reporting to Parliament through Ministers in the Department for Business Innovation and Skills (BIS). Operating as a Trading Fund, Ordnance Survey is required to fund its operations from its own revenue and deliver a return to government.



1Spatial provides the software solutions and services that manage the world's largest spatial big data. We work with users and creators of the largest geospatial databases on earth, helping them collect, manage, plan, maintain, publish and interpret location-specific information. Our clients include National Mapping Agencies, Land Registries, utility and telecommunications companies, and government departments including emergency services, defence and census bureaus. For more information please visit [www.1spatial.com](http://www.1spatial.com) or contact us on [info@1spatial.com](mailto:info@1spatial.com)



The company has experience in organising international workshops, which attract high level international speakers and delegates. Topics have included climate change, biodiversity issues, land cover and land use, incident management and location based services. Gistandards Ltd has been involved with standards writing for the last 15 years dealing with environment, geospatial, incident management and eGovernment. Gistandards Ltd hosts several websites, including the CEN/TC 287 website including several portals.



Informed Solutions is a leading independent provider of digital transformation, technology, advanced data analytics and systems integration services. Characterised by our enduring core principles of Innovation, Excellence and Integrity, we are highly trusted suppliers to Public and Private sectors. The Company takes pride in its reputation for the timely delivery of high performing solutions to complex business and safety critical problems, particularly where place, location or geography are important.

# Head Judges



Scott Cain is Executive Director of Strategy, Business Development and Communications for the Future Cities Catapult. He developed the Technology Strategy Board's investment case and led the £34.5m Future Cities Demonstrator programme. Previously Scott co-founded and chaired Global Entrepreneurship Week and was CEO at Enterprise UK. Scott is also the founding partner of The Long Run Venture.



Dr Andrew Hudson-Smith is Director of the Bartlett Centre for Advanced Spatial Analysis (CASA) at The Bartlett, University College London. Andy is a Reader in Digital Urban Systems and Editor-in-Chief of Future Internet Journal, he is also an elected Fellow of the Royal Society of Arts, a member of the Greater London Authority Smart London Board and Course Founder of the MRes in Advanced Spatial Analysis and Visualisation and MSc in Smart Cities at University College London. He is also a member of the All Party Parliamentary Group on Smart Cities.



Paul Longley (B.Sc., Ph.D., FAcSS) is Professor of Geographic Information Science at University College London. His published work includes sixteen books (plus translations) and over 150 refereed journal articles and contributions to edited collections. He has been involved in 48 research grants, including the current Consumer Data Research Centre, funded by the Economic and Social Research Council, and has supervised 46 Ph.D.



Jeremy Morley is an Assistant Professor at the University of Nottingham and Geospatial Science Theme Leader at the Nottingham Geospatial Institute. He has worked for almost 20 years in GIS in higher education and has supervised student projects from undergraduate to PhD level. His research interests include crowd sourcing and citizen science, GIS on the Web, and 3D GIS and BIM.



Kay Pallaris is a chartered Geographer who has worked within the regeneration and development sectors for over 15 years applying spatial analytics to study and research spatial phenomena. In all her assignments within various practices, including NGO, Local Government, Urban Design Consultancy, and the London 2012 Olympic Games, she introduced geospatial capabilities that changed business practices, firmly establishing the value of spatial analysis and geospatial information management as a driver for successful outcomes. Kay is passionate about evidence-based approaches to planning and design of environments to ensure their long-term, sustainable success.



# Best Paper at Conference

Sponsored by Informed Solutions



## The Winner:

“Securing Human and Environmental Rights through PGIS” by Doug Specht, the Managing Director of Voz Geographic Information Systems

## About the winner:

Doug Specht is a Doctoral Researcher at the University of Westminster and former geography teacher. He works in researching the role of technologies such as Participatory GIS (P-GIS), Big Data and mobile devices in the codification and legitimisation of knowledge within the context of International Development.

## The project:

His talk was based upon research carried out for VOZ, the Non-profit he established in 2013. The research was supported by the University of Amsterdam, Universidad del Valle, and the University of Westminster. Drawing upon case studies from Colombia and Syria the paper sought to explain how locally generated geo spatial information can be used to promote human rights, suggesting that it is maps and (P-)GIS, rather than social media that is needed to highlight human rights and environmental abuses in a way that moves us beyond documenting abuses and towards holding those responsible to account.



*“I am incredibly grateful to receive this award, which is really for the extended VOZ team. I believe it helps to show the importance of the work being carried out by grassroots and community mappers around the world and would like to dedicate it to those who have paid the ultimate price in trying to have their voice heard in the face of grave human rights and environmental struggles.”*

**Doug Specht**

# Best Paper within the Event Programme

## The Winner:

“Glasgow, setting the standard for Europe” by Diarmad Campbell, British Geological Survey and David Hay, Glasgow City Council

## About the winner:

Dr Diarmad Campbell is the British Geological Survey's Chief Geologist, Scotland, responsible for the onshore geological surveying and 3D modelling of Scotland. He is also the Chair of a European Cooperation on Science and Technology (COST) Action called Sub-Urban, dealing with the sustainable use of the subsurface of major European cities, and involving over 25 countries. This is developing innovative and highly visual ways of communicating subsurface 3D and 4D data and knowledge to planners, policy makers, and practitioners.

### What the Judges said:

*“It was a pleasure to watch someone articulate in such a clear manner, why geology is important to the Future Cities agenda.”*

## The project:

Diarmad presented on the importance of Sub-surface data and the work of the Accessing Subsurface Knowledge (ASK) Network and specifically the Glasgow Specification for Data Capture (GSPEC) in improving data access and re-use. He was able to effectively demonstrate the importance of geology on the development of a future city and also the importance of geospatial technology to manage the complex data.

## Shortlisted papers:

- “Opening ArcGIS” by Eamonn Doyle, Esri-Ireland.
- “Geospatial Survey Data Management on the Thameslink Programme, past, present and future” by Barry Gleeson, ThamesLink.
- “Distilling what the business wants from data – building a Business Data Lake” by Steve Jones, CapGemini.
- “The Value of Geospatial Information in the Policy Making Process” by Clare Hadley, Ordnance Survey.



*“I am very proud indeed to have received the award from AGI for the 'Best Paper within the Event Programme'. I'm particularly delighted that I was able to use the paper to highlight the importance of geology in urban environments, and to illustrate this with the British Geological Survey's recent work with Glasgow City Council. This has assisted a wide range of decision makers through improved understanding, modelling, and visualisation of the ground Glasgow is built on.”*

**Diarmad Campbell**



# Award for Excellence in Education

## The Winner:

"A GIS and Spatial Analysis module" delivered by Luke Burns, School of Geography, University of Leeds

## About the winner:

Dr. Luke Burns is a Lecturer / Teaching Fellow in the Centre for Spatial Analysis and Policy in the School of Geography at the University of Leeds. Having worked in both industry and academia, Luke has developed specialisms in several areas of quantitative human geography including GIS applications, geodemographics and census analysis and regularly delivers presentations at conferences and events on his work. Luke teaches on a broad selection of analytical courses comprising undergraduate, postgraduate and continuing professional development (CPD) and currently leads the 'GIS and Spatial Analysis' module recognised by this award.

## The project:

This undergraduate module has been adapted by Luke since taking over for the 2013/14 academic year during his first year of lecturing at the university. Despite being a complex module introducing many students to GIS/geospatial concepts for the first time, overall student performance was high reflecting effective teaching practices and engagement. Historically, enthusing students about GIS at level 2 (undergraduate) is difficult but Luke and his demonstrator team really did achieve this through this innovative module. This bold statement is supported by official student feedback, the number of students seeking GIS placements during and after the module, overall module performance and those actively looking to study further GIS modules in their final year. Luke was also voted the Teaching Star of the year (in Geography) by the students, the basis of which was down to the design and delivery of this module.

### What the Judges said:

*"This entry fizzles with the energy and commitment that was doubtless deployed in the teaching of a large undergraduate intake. The student feedback provides wide-ranging and detailed testimony to the achievements of what is clearly a very successful teaching team."*

## Shortlisted entries:

- A GIS Educational Programme for A-Level Students delivered by the Association of Geographic Information Northern Ireland (AGINI).
- GIS for Business Level 3 submitted by Jim Kelly - South East Regional College, Northern Ireland.



*"It is incredibly pleasing to pick up this award, particularly knowing how many good geospatial courses are taught in universities and commercially across the country. I think this award is a reflection of being successful at getting the next generation of GI professionals excited and confident when working with spatial data – and that is very satisfying. Thanks to the AGI for this recognition."*

**Luke Burns**

# Award for Best Geospatial Data Visualisation

## The Winner:

“GB Minecraft” by Ordnance Survey

## About the winner:

Ordnance Survey is Great Britain’s mapping agency, making some 10,000 updates to the mastermap of the country every single day.

## The project:

In order to engage with a younger audience and promote a digital message, Ordnance Survey research intern, Joseph Braybrook, created the Minecraft map of Great Britain – available for gamers to download for free from the Ordnance Survey website. The map made up of over 83 billion blocks was downloaded over 200,000 times in 12 months and created a social media spike. The project took height data and vector files processed in QGIS and exported into images recognisable by the millions of Minecraft gamers across the world.

## What the Judges said:

*“This was a refreshing and outstanding application of geographic visualisation, with over 100,000 downloads it underlines the potential for gaming and virtual environments to make geospatial data and methods accessible to a wider audience.”*

## Shortlisted entries:

- Hot Blocking by Stephen Forgan, GLA.
- GuageMap by Shoothill.



*“We were delighted that the Minecraft map of Great Britain was selected to win the award for Best Geospatial Data Visualisation. The project takes geospatial data and makes it accessible in a relevant and modern way – ideal for gamers and to spread the message about the power of geographic information.”*

**Melanie Osborne, Corporate Communications Manager  
at Ordnance Survey**

# Award for Excellence in Research & Development



Sponsored by GIStandards

## The Winner:

"Terrestrial and marine ecological classification and land-use land-cover mapping from satellite imagery for Abu Dhabi emirate" by Proteus FZC.

## About the winner:

Proteus has been operating successfully since 2011 and are based in Abu Dhabi, UAE, and Bristol, UK. Proteus offers full turnkey global solutions for seafloor survey, seabed classification, and terrestrial mapping projects.

### What the Judges said:

*"The scale of this project and the integration of land based / maritime satellite imagery to influence planning decisions/ track carbon was particularly ground breaking."*

These projects are produced from very high resolution satellite imagery and are delivered for environmental, oil & gas, marine biology and other applications in Europe, the Middle East and Caribbean.

### The project:

The award entry describes the ecological classification and Land-use Land-cover mapping from satellite imagery project, which is being delivered to the Environment Agency Abu Dhabi (EAD) by a

consortium led by Proteus. Using Very High Resolution multi-spectral satellite imagery the entire Abu Dhabi Emirate is being mapped at 1:10,000 scale. 42 terrestrial and 13 marine habitats are being depicted together with Land Use and Land Cover data sets.

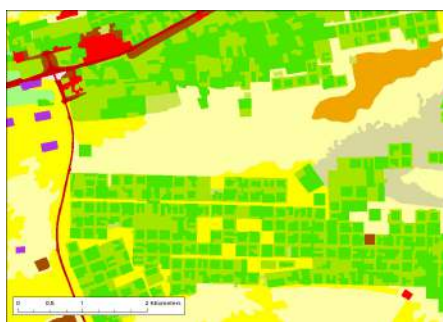
The paper has demonstrated an approach that is easily replicable, and is particularly useful in a region where the ecological ecosystem is fragile and under threat from major developments. It has delivered not only a dataset but a methodology for future updates and for wider application. Combined with cutting edge spectral analysis techniques this has produced a valuable dataset that is cost effective on a large geographic scale.

*"We are delighted to be recognised by the AGI for spear-heading what has been a ground breaking project, both in terms of scope and scale. This is a great demonstration of the forward thinking nature of the Environment Agency Abu Dhabi."*

**Chris Burnett, Proteus**

## Shortlisted entries:

- An assessment of earthquake vulnerabilities in Kathmandu, Nepal for identification of optimal immediate aid sites by Andrew MacLachlan.
- SPACEial North West - Examining the impact of changing urban morphology in the North West Region Crossborder area using Maps, Stats, Apps and Remote Sensing techniques.



4100-Sand sheets and dunes with tree cover
4120-Sand sheets and dunes with shrub cover
4130-Sand sheets and dunes with dwarf shrub cover
4140-Sand sheets and dunes with perennial herbs and graminoids
4200-Mega-dunes
5120-Gravel plains with dwarf shrub vegetation
5130-Gravel plains with sparse vegetation
8100-Date plantations
8200-Farmland
8300-Livestock areas
8400-Forestry plantations
9100-High density urban
9120-Low density urban
9240-Other industry
9300-Lessure areas
9400-Paved roads
9500-Disturbed ground



THE ASSOCIATION  
FOR **GEOGRAPHIC**  
**INFORMATION**

1 Kensington Gore, London SW7 2AR  
Tel: +44 (0) 20 7591 3190  
[www.agi.org.uk](http://www.agi.org.uk)

# Award for Excellence with Impact



Sponsored by 1Spatial

## The Winner:

The UK Soil Observatory by the UK Soil Observatory Partners.

## About the winner:

The UK Soil Observatory ([www.ukso.org](http://www.ukso.org)) is a Natural Environment Research Council (NERC) funded £500,000 geo-community initiative between nine leading soil research institutions. Currently, soils data, knowledge and expertise is scattered across a wide range of institutions. Our objective is to simplify access to these data, harmonise licensing and ensure data interoperability to improve the clarity and ease-of-use of our soil data resources.

## The project:

Offering over 100 free national soil data layers in a GIS map viewer and global crowd sourcing, the UKSO represents a unique web platform for soil data dissemination and acquisition. Users can view and access UK soils information, data, maps and apps and download layers for use in their own GIS systems.

### What the Judges said:

*"An ambitious project with huge potential as a spatial research resource for a range of fields including agriculture and geotechnical engineering."*

*"The UK Soil Observatory (UKSO) partners were thrilled and honoured to receive the AGI Award for GeoSpatial Excellence with Impact at the BAFTAs for GIS! UKSO is a real geo-community effort. The award demonstrates industry recognition of the value we can achieve when working together. It is a great good news story that has put a smile on everybody's face. Thank you AGI!"*

**Patrick Bell, BGS**

Soil is where people and businesses interact with the Earth, whether for growing food, or for building homes, business premises and infrastructure such as roads, cables and pipes. As society expands, the demand to deliver more from our soils grows. This intensification can degrade or lead to the loss of soil. The more we know about soil the better we can manage and exploit it in a sustainable way.

## Shortlisted entry:

- Terrestrial and marine ecological classification and land-use land-cover mapping from satellite imagery for Abu Dhabi emirate.





# Award for Best Use of Geospatial for Business



Sponsored by Ordnance Survey

## The Winner:

Knowledge Based Mobile Asset Management for Walsall council submitted by Kaarbon Technology.

## About the winner:

KaarbonTech develops innovative asset management software solutions that enable local authorities to manage their highways assets in a strategic and proactive manner. The software combines Ordnance Survey GIS data with environmental data sets, such as flood zones, to enable users to manage and mitigate risk factors. The software is designed to be used seamlessly on handheld Android and iOS devices or in the office.

*"We are delighted to be named as winners of this prestigious award. We are proud to see our innovative 'Gully SMART' software being acknowledged for the results that it is delivering for our customers."*

**Mark Entwistle, Managing Director, KaarbonTech**

### What the Judges said:

*"This has all the elements of using geospatial information, operating at scale, making better decisions, and delivering business benefits - all with a user-centred approach. The environment is better, the council is more efficient and they save money. What is not to like!"*

### The project:

The 'Knowledge Based Mobile Asset Management Project' for Walsall Council combined the innovative use of geographical data and digital information management.

Developed by KaarbonTech 'Gully SMART,' is an innovative asset management software system which can be used on handheld Android and iOS devices. The system uses Ordnance Survey GIS geographical data sets to map and monitor drainage networks and other local authority assets.

## Shortlisted entries:

- SPACEial North West - Examining the impact of changing urban morphology in the North West Region Crossborder area using Maps, Stats, Apps and Remote Sensing techniques.
- UK metadata Editor by EDINA, University of Edinburgh.
- Easimap2 for Incidents by the Environment Agency.



THE ASSOCIATION  
FOR **GEOGRAPHIC**  
**INFORMATION**

1 Kensington Gore, London SW7 2AR  
Tel: +44 (0) 20 7591 3190  
[www.agi.org.uk](http://www.agi.org.uk)



# Student of the Year

Sponsored by Esri UK



## The Winner:

"Determining Cycle Mode Choice for Commuting using New Route Analysis Methods" by Richard Thomas.

## About the winner:

Richard has worked for many years as a design engineer in the consumer electronics industry, having gained a BEng degree in Electronic Engineering with Computer Science at University College London (UCL). Looking for a career change to address more "real world" issues and rekindling his long-term interest in Geography, he has just completed a University of Leeds MSc in GIS (Distinction). He sees GIS as a discipline with huge potential, given the rapidly growing volume of public and affordable geographic data, and the growing web capability to present and manipulate such data interactively.

*"This means a great deal to me. It wasn't easy to return to university after many years working in quite a different field. But I was excited by the challenges of GIS, spurred on by the enthusiasm of my lecturers at the University of Leeds, and I'm now surprised and proud to be given this award."*

**Richard Thomas**

### What the Judges said:

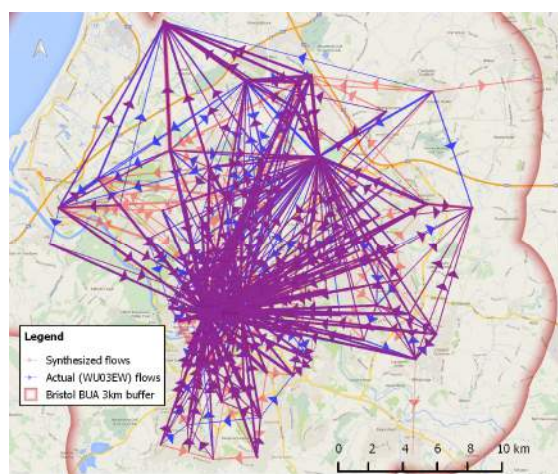
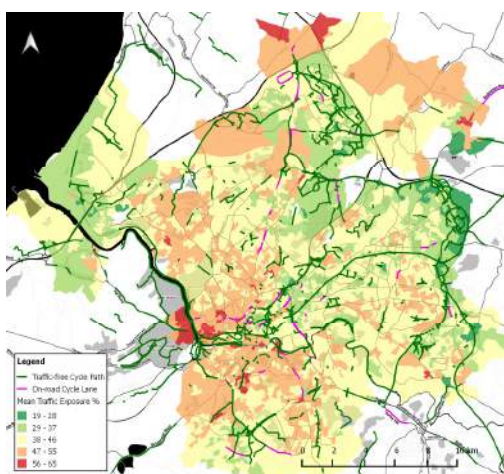
*"A well-presented paper in which the analysis was explained clearly and results were presented in a way which was easy for the reader to understand."*

### The project:

Taking the UK city of Bristol as a basis for analysis, this study looked at a method of using a cycle-specific routing engine for a large number of representative commuting journeys and generating associated route cost functions. To overcome availability limitations on 2011 small area census commuting data, new Java software was developed to synthesize representative commuting origin-destination flow data at a fine spatial resolution, using as constraints the census data that is available.

## Shortlisted entries:

- A spatial analysis of child pedestrian road traffic accidents in Aberdeen - James Watt
- Water productivity (WP) index of tea - Jennifer Willbourn



# Award for Exceptional Service

The AGI would not be able to function in its current form without the hard work and dedication of many of its volunteer members. This award tries to go some way towards acknowledging their efforts. This award is given to someone within the AGI volunteer base who has demonstrated exceptional commitment to the mission of the AGI, notably during the year. The recipient of the award does so on behalf of all the volunteers and is chosen by the AGI team.

## Award Recipient:

The award for exceptional service towards the AGI mission by a volunteer was given to Peter Kohler for his considerable effort researching the skills matrices of other companies in order to provide a wealth of information to formulate a skills framework for the AGI's CPD programme.

*"I'm delighted to receive this award and have to thank the people at the AGI and the other Volunteers in the CPD group for their support throughout. I look forward to another year working with the AGI in building bridges within and helping to shape the Geospatial Industry."*

**Peter Kohler**

In addition, the judges also recognised significant contributions from Abigail Page, for her dedication to delivering the new website; Jonathan Marshall for his support on finance matters and the new CRM; Laura Kinley for considerable marketing, communications and event support, Matt White for strengthening and expanding the sponsorship base and to Rollo Home for his admirable leadership of the Geo Big5 events programme.

The AGI would also like to express individual gratitude to the following volunteers who also made noteworthy contributions to helping shape the AGI during 2014:

- |                   |                   |                  |                  |
|-------------------|-------------------|------------------|------------------|
| • Robert Barr     | • Bruce Gittings  | • Andy Murdock   | • Angharad Stone |
| • Hugh Barron     | • Jeremy Hilderly | • Andrew Newman  | • Derek Tate     |
| • Emma Bee        | • Duncan Hill     | • Peter Parslow  | • Liz Tucker     |
| • Mike Bell       | • Iain Langlands  | • Hannah Pettitt | • Rob Walker     |
| • Andy Coote      | • Owen MacDonald  | • Les Rackham    | • Ed Wallington  |
| • Ben Fisher      | • Val Marlowe     | • Antony Scott   | • Andy Wells     |
| • Charlie Gilbert |                   |                  |                  |

In addition, we would also like to thank those individuals who help facilitate the AGI's Special Interest Groups, Committees and national/regional groups.



# Award for Career Achievement in GI

## The Winner:

Keith Adlam, Retired employee of the British Geological Survey (BGS)

## About the winner:

In the 1980s, Keith introduced GIS to BGS and established himself as a true pioneer in this technology, keeping BGS at the forefront of GIS innovation.

The release of Desktop GIS in the 1990s transformed the use of GIS at BGS, making digital data and GIS functionality accessible to more employees facilitating more effective data sharing; Keith pioneered the Geoscience Data Index which evolved to attract huge audiences from both within and outside BGS. In 2000, Keith led the organisation's deployment of web-based GIS, making BGS's vast data assets accessible to a new global audience. More recently, he introduced a mobile data capture GIS application for field-based surveyors and spearheaded the use of GIS for 3D visualisation.

Keith harnessed the power of GIS technology to develop new reporting and data products and services, which BGS used to generating revenues for the business. These included the BGS automated report writing service (GeoReports) and a service for the insurance industry assessing the likelihood of property subsidence.

Keith became renowned for his GIS knowledge and expertise both within BGS and externally with the organisation's partners and customers. Keith was a champion and pioneer of GIS at BGS. With every leap forward in GIS technology over the years, Keith advanced and developed the systems at BGS, providing new capabilities that many of his geological colleagues would not even have dreamed of. He proved the organisational benefits of GIS over and over again.

After 36 years, of distinguished service, Keith Adlam retired from the BGS in October 2013.

*"I was delighted and honoured to be nominated by my colleagues at the British Geological Survey for the AGI Award for Career Achievement in GI. Over my working life there have been tremendous advances in GI and I have enjoyed being part of this. To actually achieve an award for my work is a fantastic finale."*  
**Keith Adlam**



# Joining The AGI

The Association for Geographic Information (AGI) exists to represent the interests of the UK's geographic information (GI) industry.

The AGI, by way of its unique membership forum, brings together this GI community to share ideas on best practice, experience and innovation, and offers access to an unparalleled range of event and networking opportunities with significant business benefits. Becoming a member of the AGI ensures that you have a voice within the GI industry.

## **Influence**

Do you have an issue or concern that you want to bring to the attention of key decision makers within the Geographic Information (GI) industry and government? Do you want to discuss this more widely with your peers? Membership of the AGI will provide you with a channel of communication to ensure your voice is heard. This can be via our member consultations, our engagement with government, as part of our special interest groups and regional groups or by standing for a seat on our AGI Council.

## **Information**

As a member of the AGI, you'll have access to the latest and most relevant news and information from the UK's GI industry and policy makers. Not only that, we'll provide you with the perfect forum for spreading your own information out to an audience of like-minded professionals.

## **Involvement**

Are you looking for the opportunity to build your career, develop your business potential, or meet industry standards? As a member, you'll be provided with the right tools to do so. You can attend our specialist events at reduced costs, you can network with potential suppliers or clients, you can add content about yourself and your organization to our website, you can avail yourself of our CPD scheme and you can put yourself forward for our prestigious annual awards. Getting involved will make all the difference and will ensure you gain the maximum benefit from your membership.

## **Membership rates and categories**

Whatever your position within the GI industry, or whatever type of organisation you belong to, there is a membership category and rate to suit you. For an up-to-date list of our subscription rates and types, please visit the membership section of our website. For a trial period only we are now offering individual membership for just: £60 + VAT per annum (one-off payment by direct debit, BACS, cheque, cash or credit card) or £5.50 + VAT per month (12 monthly instalments by direct debit). This gives full membership of the AGI for 12 months.

You can become a member of the AGI online. You will receive immediate membership benefits including a welcome pack, individual monthly newsletters, free 'GIS Professional' subscription, reduced attendance rates at AGI events and discounts on publications - indeed all of the benefits listed overleaf.

So join the AGI today and immediately become part of a community of over 2000 individuals working in GI. We look forward to welcoming you as part of our vibrant and skilled GI community.

Website: [www.agi.org.uk](http://www.agi.org.uk)  
Email: [info@agi.org.uk](mailto:info@agi.org.uk)



THE ASSOCIATION  
FOR **GEOGRAPHIC**  
**INFORMATION**

1 Kensington Gore, London SW7 2AR  
Tel: +44 (0) 20 7591 3190  
[www.agi.org.uk](http://www.agi.org.uk)



# AGI Contacts

## Anne Kemp

Chair AGI Council 2013-14  
Anne.kemp@agi.org.uk

## David Henderson

Vice Chair AGI Council 2013-14  
David.henderson@agi.org.uk

## David Reay

Membership & Sponsorship Manager  
David.reay@agi.org.uk

## Claire Gilmour

Events Manager  
Claire.gilmour@agi.org.uk

## Diane Sandeman

Marketing & Communications Specialist  
Diane.sandeman@agi.org.uk



AGI Council 2014



@AGI\_News  
#GeoCom  
@GeoCommunity



Association for  
Geographic Information



THE ASSOCIATION  
FOR **GEOGRAPHIC**  
**INFORMATION**

1 Kensington Gore, London SW7 2AR  
Tel: +44 (0) 20 7591 3190  
[www.agi.org.uk](http://www.agi.org.uk)